

# **FSUIPC: Application interfacing module for Microsoft Flight Simulator**

## **Flight Simulator Universal Inter-Process Communication**

by Pete Dowson, © 28th August 2009

Support Forum: <http://forums.simflight.com/viewforum.php?f=54>



## **INSTALLATION and REGISTRATION GUIDE**

### ***Version 3.93 of FSUIPC.dll***

**Note:** All my Windows based software is always available in the latest versions from <http://www.schiratti.com/dowson>. (Selected modules are also available elsewhere).

This is *not* my web site (I have none) but the list is there courtesy of Enrico Schiratti

As well as the document you are now reading, this package contains “**Install FSUIPC.exe**” that will install the following parts in the Flight Simulator Modules folder:

FSUIPC.dll	The FS module itself, version 3.93
FSUIPC User Guide.pdf	This document: please read it! (Acrobat format)
FSUIPC History.pdf	A list of changes in each version (Acrobat format)
FSUIPC for Advanced Users.pdf	More technical information only (Acrobat format)
List of FS2004 Controls.pdf	FS2004 controls list (Acrobat format)
FSUIPC Lua Plug-Ins.pdf	Introducing the powerful Lua plug-in facilities
FSUIPC Lua Library.pdf	Documentation for the additional FSUIPC Lua libraries
Example Lua Plugins.zip	A zip file containing some short Lua examples
Lua license.pdf	A copy of the Lua licensing agreement

You will also find, in the ZIP, these optional files:

APChart.MCRO	Macro file example for APchart Gauge
767.MCRO	Macro file example for Level D 767 (thanks to Nico Kaan)
737 OHD.MCRO	Macro file example for PMDG 737 overhead

For other bits and pieces, like TrafficLook and WeatherSet, please visit my Support Forum. You will also find interim versions and bug fixes there—well worth a regular scan. The link is shown above, in the subtitles.

If you want programming details, or a full list of FSUIPC offsets for use in the assignable offset controls, you need to get the FSUIPC Developer Kit, (SDK).

**The following pages provide full instructions on Installing and/or Registering FSUIPC3, and Registering WideFS6**

# Installation

For the installation, you need normal administrative privileges. If you are running as an ordinary user you may be able to use “Run As” to save Logging out and back on as Administrator.

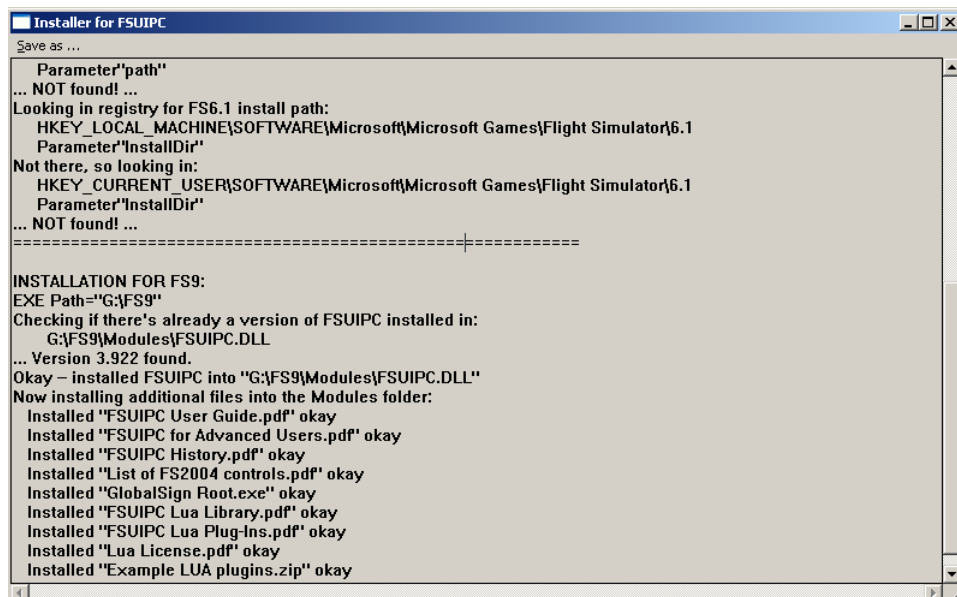
Place the “Install FSUIPC.exe” program onto your desktop, or into a temporary folder, and double click it to make it run.

This will do several things, in order:

1. Finds your FS installation: It will do this by checking the Registry. If, for some reason, the Registry is not pointing correctly to your FS installation the installer will present you with a standard Explorer type window and ask you to locate FS9.EXE, the actual FS main program.

Note that the installer will also work for FS2002 and FS2000, CFS2 and CFS1, and in fact it will attempt to do them all in one run if you have them all correctly installed on the one PC.

2. Checks for existing FSUIPC: If there is already a version of FSUIPC which is later than the one being installed, the latter will not install. Otherwise the new FSUIPC.DLL is copied into the correct FS modules folder(s).
3. Enables special permissions for the Modules folder, so that on Vista or Windows 7 the INI, LOG and KEY files can be created and updated whilst FS is running.
4. Other files (documents, in fact) in the package are then copied into the Modules folder alongside FSUIPC. These are for your reference.
5. Whilst it does this it will display what it is doing on screen, in a readable text “Log”, like this:



6. For each successful Install you will get a confirmatory prompt looking like this:



If anything goes wrong there will be information about this in the Log, and you will get a different prompt, telling you of the problem. If this happens, *before* clicking “Ok”, scroll through the Log (there’s a scroll bar on the right if the log is longer than the Window) to look for lines mentioning problems or errors or warnings. If you want help, click on the “Save As” entry in the Menu and save the log with a name such as “FSUIPC install.log”. This will contain everything needed to help you. Just show its contents in a message to me in my Support Forum.

This complete process may repeat to cover other versions of FS or CFS, if you have them correctly installed.

Finally, the Installer offers you the chance to Register FSUIPC3 and/or WideFS6, or simply check your registration. This appears on top of the Log display:



First select whether it is FSUIPC3, WideFS6, or both you are registering (or checking).

The options offered are:

- Delete the previous registrations (this also lets you enter new ones). This is useful when you are changing one of the Keys in order to get your Name and Address/Email the same for both FSUIPC3 and WideFS6.
- Check the existing registrations. This will also effectively re-register you automatically if you have re-installed Windows or moved to a new PC, and have copied your previous FSUIPC.KEY file into the FS Modules folder already. It saves you having to re-enter the Key(s).
- Enter new registrations for FSUIPC and/or WideFS.

When you press OK you will be presented with the standard FSUIPC registration dialogue where you can enter your details and the Key. If you selected "Both" FSUIPC3 and WideFS6, you will get first one, then the other, though you will not have to enter your name and address/email twice, those will be remembered.

For more details about Registration, please refer to the section by that name, just below.

## Entering Registration Details

If you pay for a registration key for FSUIPC then you get access to all the facilities it provides, and all programs will interface to it whether they are accredited or not.

The 12-character key you will purchase is inextricably related to the name and address (normally your email address) you used when applying for the Key. It is this information you need to enter. When you've checked the option to register FSUIPC in the Installer, you will be presented with a dialogue similar to the one shown on the right. Enter the details *exactly* as you are given in the details supplied with the Key—see the example on the right.

Note that it does *not* matter if your email address is changed later. It is not used as an email address, on as a means of identifying you as the license holder. The only time a change may present a problem is if you purchase FSUIPC one day, and WideFS another day, after changing the email address (or vice versa, of course). The registration must have the same name and address in both cases, so be sure to mention this when making the second purchase, and supply your old email address at the time.

All these details are remembered by FSUIPC in a file called "FSUIPC.KEY", which is saved alongside FSUIPC4 in the Modules folder. **Save a copy of your FSUIPC.KEY file** (from the FS Modules folder). If you change computers, or reinstall Windows, you will need to re-enter the registration details and these are recorded for you in that KEY file, which you can read in any text editor.

**Please be sure to keep a backup copy of the FSUIPC.KEY file, for safety!**

**WideFS registration** follows an identical procedure and can be done at the same time. Please note that your name and address details *must* be identical for both, and, in fact, will be copied for you by FSUIPC when you press the **Register WideFS** button. But the access key will always be different. It, too, is saved in the FSUIPC.KEY file.

### INVALID KEY PROBLEMS

Please note that registration keys are only valid from the date of purchase. If you find your registration not working or the keys rejected, please check that your PC has the correct date set. It often happens that when folks install a new PC or motherboard, or even re-install Windows, the system date is left, forgotten and not corrected.

The screenshot shows a 'Registration' dialog box with a blue title bar. Inside, it says: 'For full FSUIPC options, enter your details EXACTLY as given to get your Registration key, then the Key itself, and press OK.' There are three input fields: 'Your name (min 6 chars)' with 'John H. Smith', 'Email or Address/ZIP (min 6 chars):' with 'johnsmith@someste.co.uk', and 'Enter or paste the Key here:' with three boxes containing 'HD3K', '4910', and 'QB3E'. Below these is a note: 'Get the 12-character Key from the FSUIPC or WideFS supplier using the exact name and address details you enter above.' At the bottom are three buttons: 'Clear', 'Cancel', and 'OK'.